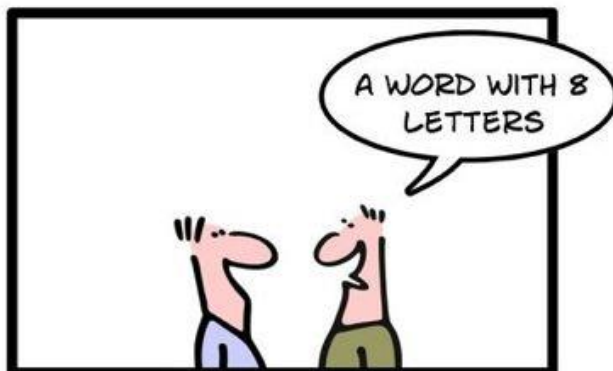
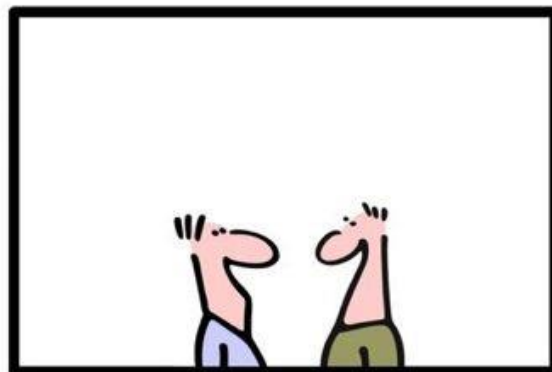
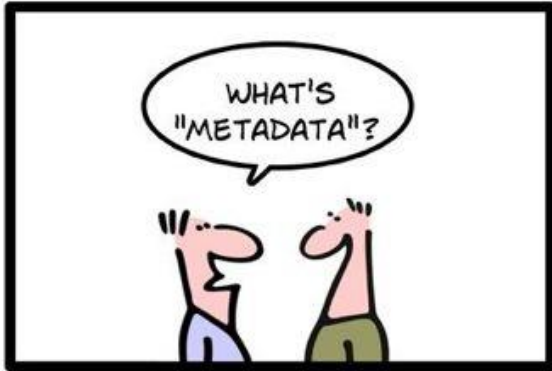


# Evolution of Baobab LIMS: coding in metadata standards for infectious disease

Dominique Anderson, PhD

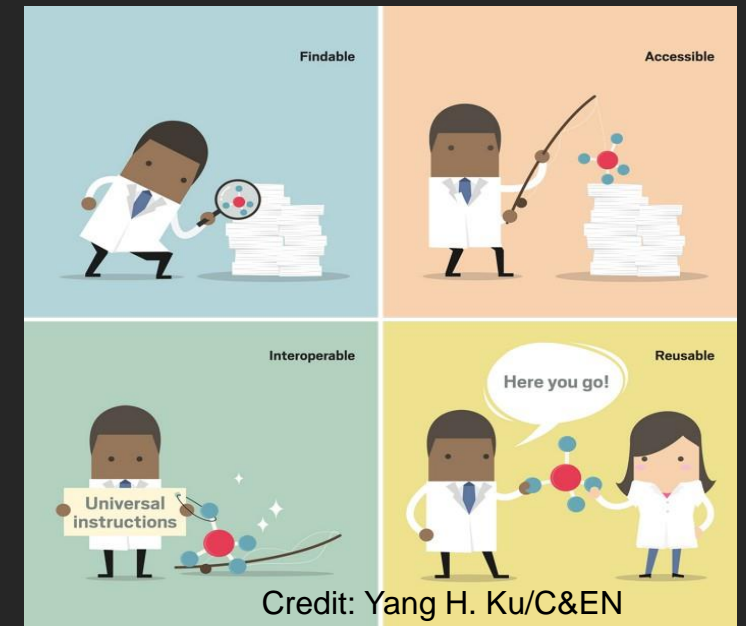
## SIMPLY EXPLAINED: METADATA



geek & poke

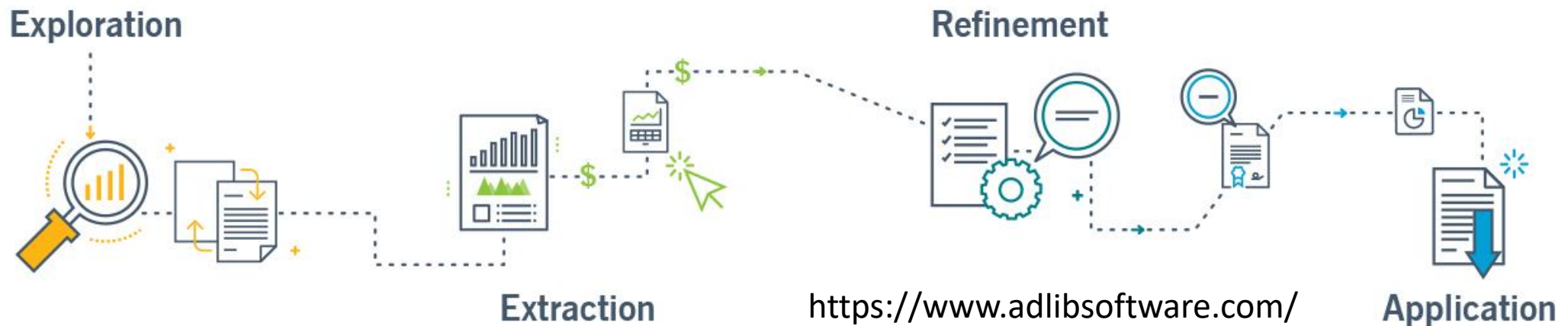
# What is metadata and why should we have standards?

- Data about data
- The information needed to find, understand and effectively use the data.
- Key to 'unlock' an information resource
- A metadata standard establishes a commonality
  - Vocabularies
  - Structure
  - Use and interpretation
- Increases the utility of data
  - Interoperability between systems
  - Makes it easier to find relevant data
  - Provides access to data
  - Enhances discovery from data



# Metadata management

- The admin of data
  - Integration, access, sharing, linkage, analysis and maintenance
  - Physical or virtual
  - Maximize the potential in an organizations data

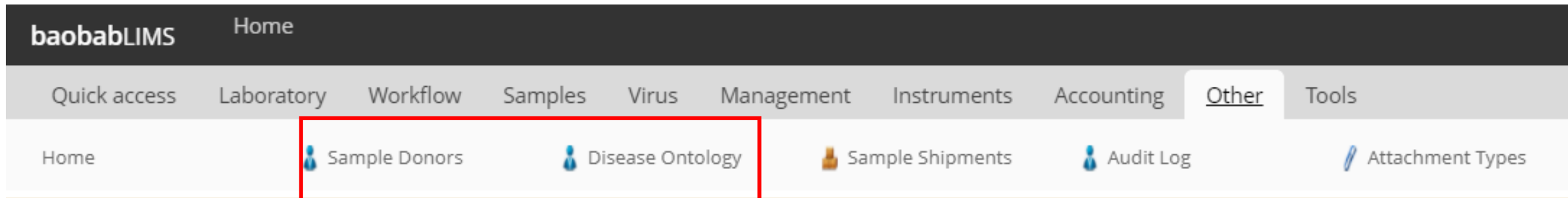


# LIMS data management

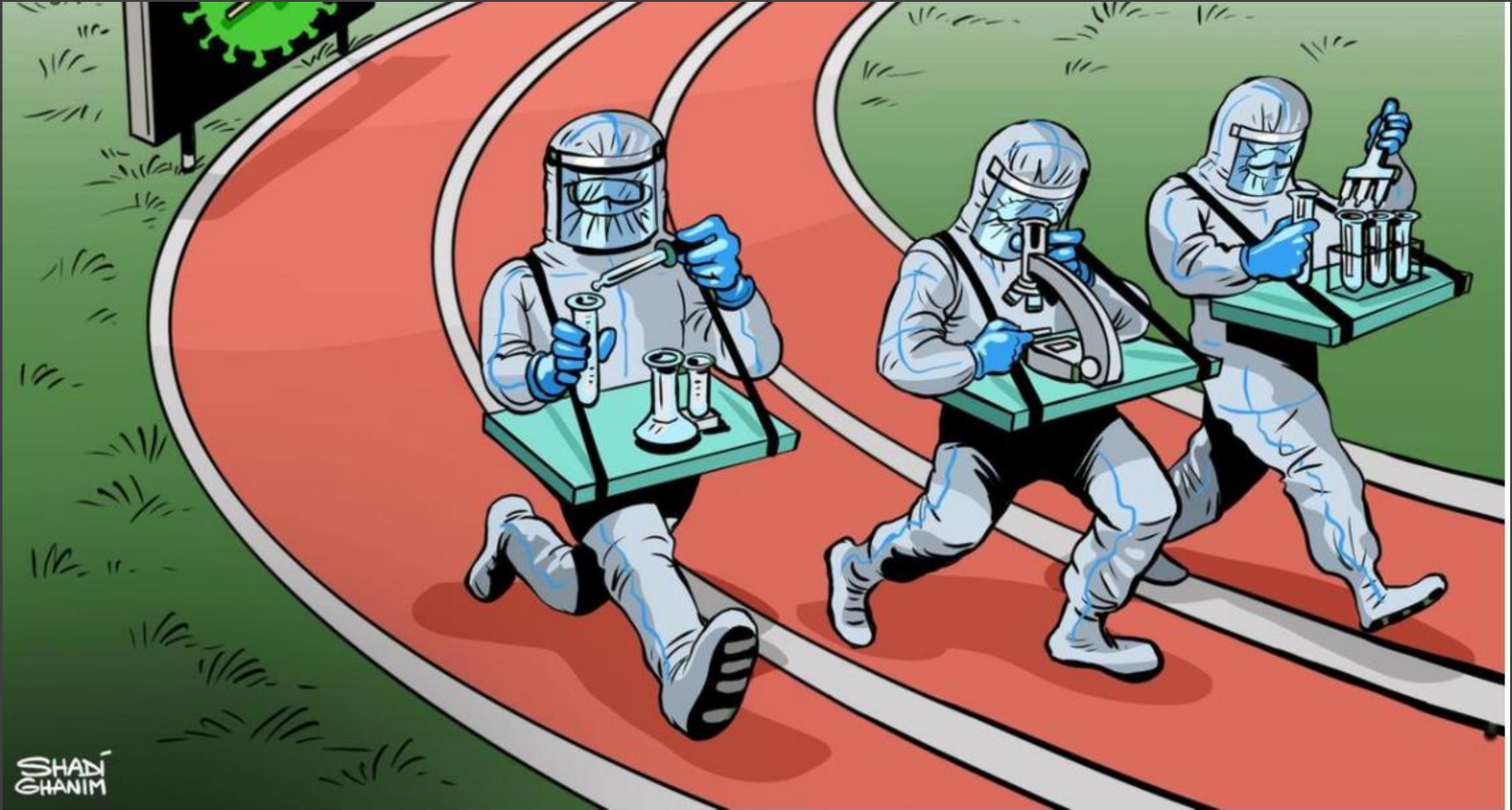
- Improve data management in lab to increase lab potential
- Sample enters the Laboratory
- Data enters the data management tool
  - Roadmap of the sample
  - Creating valuable linkage
  - Metadata standards make the roadmap readable and universal

# Baobab LIMS metadata awareness

- Workflow of a biobank in SA
- Designed with human samples in mind
- Sample lifecycle tracking



**MIABIS – Minimum Information About Biobank data Sharing**



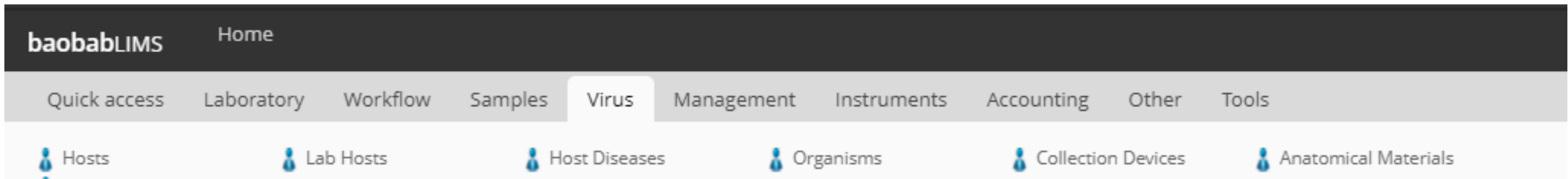
SHADI  
GHANIM

# Incorporating the data spec into Baobab LIMS

- Evaluate fields
  - Mandatory, strongly recommended, optional
  - Applicable to Sample LIMS
  - Database/ application interoperability
- Design
  - Keep in mind existing LIMS architecture
  - Aim for simplicity
  - High sample numbers
  - Infrastructure challenges
- Code and test
- Future-proof

# Baobab LIMS Virus module is borne

- Configurable content vs hard-coded options



- Import to configure



AutoSave Off virus\_sample\_import with pha4ge data

File Home Insert Page Layout Formulas Data Review View Help

Clipboard Font Alignment

A10 Amniotic Fluid

	A	B	C
1	<b>title</b>	<b>description</b>	
2	<b>Anatomical Material</b>		
3	<b>title</b>	<b>description</b>	
4	Blood		
5	Fluid		
6	CSF Fluid		
7	Pericardial Fluid		
8	Pleural Fluid		
9	Vaginal Fluid		
10	Amniotic Fluid		
11	Saliva		
12	Tissue		
13	Not Applicable		
14	Not Collected		
15	Not Provided		
16	Missing		
17	Restricted Access		
18			
19			
20			
21			
22			
23			
24			
25			
26			
27			
28			
29			
30			
31			

AnatomicalMaterial CollectionDevice Host HostDisease LabHost Organism

AutoSave Off virus\_sample\_import with pha4ge data

File Home Insert Page Layout Formulas Data Review View Help

Clipboard Font Alignment

G15

	A	B
1	<b>title</b>	<b>description</b>
2	<b>Host</b>	
3	<b>title</b>	<b>description</b>
4	Bos taurus	
5	Canis lupus familiaris	
6	Chiroptera	
7	Columbidae	
8	Felis catus	
9	Gallus gallus	
10	Homo sapiens	
11	Manis	
12	Manis javanica	
13	Panthera leo	
14	Panthera tigris	
15	Rhinolophidae	
16	Rhinolophus affinis	
17	Sus scrofa domesticus	
18	Viverridae	
19	Not Applicable	
20	Not Collected	
21	Not Provided	
22	Missing	
23	Restricted Access	
24		
25		
26		
27		
28		
29		
30		
31		

AnatomicalMaterial CollectionDevice Host HostDisease LabHost Organism

**i** 1 Instrument's calibration certificate expired:

Cell Counter

You are here: Home

**Info** Changes saved.

# System Dashboard

Switch to front

Daily Weekly Monthly Quarterly Biannual Yearly

Period: Mar 28, 2021 - Apr 04, 2021

## Analyses

0

of 0 (0.0%)  
Analyses pending

0

of 0 (0.0%)  
To be verified

## Analysis Requests

0

of 0 (0.0%)  
Reception pending

0

of 0 (0.0%)  
Results pending

0

of 0 (0.0%)  
To be verified

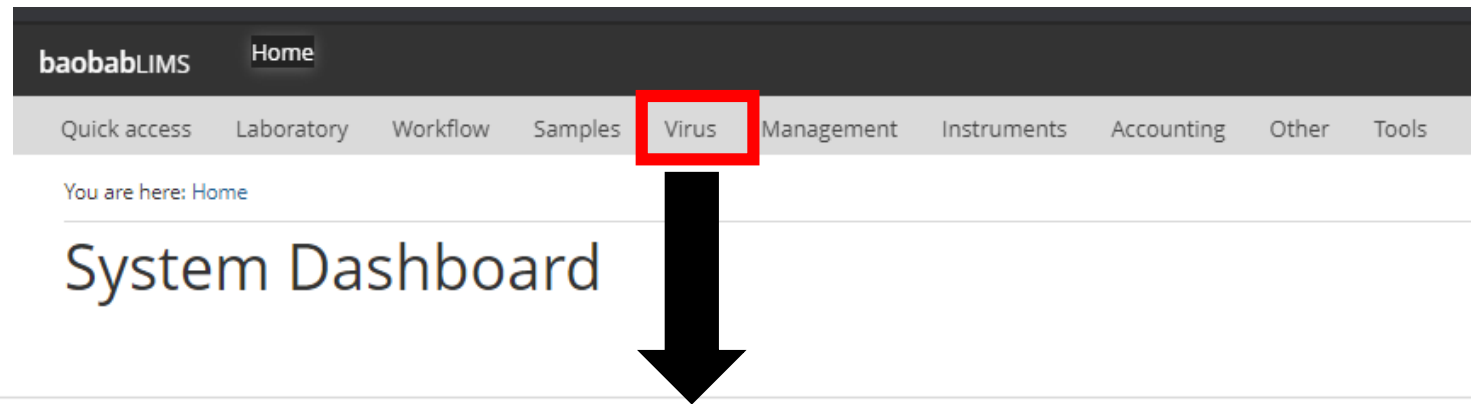
0

of 0 (0.0%)  
To be published

## Worksheets

# Adding a sample

- Default fields
- Template fields – related to sample
- Add system interoperability



## Add Virus Sample

Default

Repository accession numbers

Sample collection and processing

Host information

Host exposure information

Sequencing


 1 Instrument's calibration certificate expired:

Cell Counter

You are here: Home > Virus Samples

## Virus Samples

Add

 No items found

File Home Insert Page Layout Formulas Data Review View Help

Clipboard: Paste, Cut, Copy, Format Painter

Font: Arial, 10, Bold, Italic, Underline, Text Color, Background Color

Alignment: Wrap Text, Merge & Center

Number: General, Currency, Percentage, Thousand Separator, Decimals


Styles: Conditional Formatting, Format as Table, Cell Styles

Cells: Insert, Delete, Format

Editing: AutoSum, Fill, Clear, Sort & Filter, Find & Select

Analysis: Analyze Data

	A	B	C	D	E	F	G	H	I	J	K	L	M	N	O	P	Q	R	S
1	<b>barcode</b>	<b>Project</b>	<b>Sample Type</b>	<b>Storage L</b>	<b>Volume</b>	<b>Unit</b>	<b>Anatomic</b>	<b>Allow Sha</b>	<b>Will Return</b>	<b>Bio Samp</b>	<b>Specimen</b>	<b>Sample C</b>	<b>Sample C</b>	<b>Sample R</b>	<b>Geo Loc</b>	<b>Geo Loc</b>	<b>Organism</b>	<b>Isolate</b>	<b>Purpose</b>
2	<b>Virus Sample</b>																		
3	<b>title</b>	<b>Project</b>	<b>Sample Type</b>	<b>StorageL</b>	<b>Volume</b>	<b>Unit</b>	<b>Anatomic</b>	<b>AllowSha</b>	<b>WillReturn</b>	<b>BioSampl</b>	<b>Specimen</b>	<b>SampleCc</b>	<b>SampleCc</b>	<b>SampleRe</b>	<b>GeoLocC</b>	<b>GeoLocSt</b>	<b>Organism</b>	<b>Isolate</b>	<b>PurposeC</b>
4	E4001	Green Goblin Project	Whole Blood	Room-2.Fr	12 ml	ml	Arm			A1001	C1001	James Cai	#####	#####	Australia	Canberra	Rocket	Tresae	Research
5	E4002	Green Goblin Project	Whole Blood	Room-2.Fr	23 g	g	Arm			A1002	C1002	Spies Jan	#####	#####	South Afri	Western C	Rocket	Wormwoo	Restricted
6																			
7																			
8																			
9																			
10																			
11																			
12																			
13																			
14																			
15																			
16																			
17																			
18																			
19																			
20																			
21																			
22																			
23																			
24																			
25																			
26																			
27																			
28																			
29																			
30																			
31																			
32																			

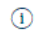
 1 Instrument's calibration certificate expired:

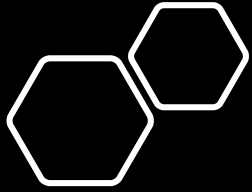
[Cell Counter](#)

You are here: [Home](#) > [Viral Genomic Analyses](#)

## Viral Genomic Analyses

[Add](#)

 No items found



# Where to next?

- Need user input and external testing
- Metadata for bacteria
- Needs to be measured against system complexity
  - System speed vs infrastructure availability
- Modular design?
- Sustainability issues

HOW STANDARDS PROLIFERATE:  
(SEE: A/C CHARGERS, CHARACTER ENCODINGS, INSTANT MESSAGING, ETC)



<https://xkcd.com/927/>

# Resources

- Follow us on twitter
  - @BaobabLIMS
- *Website*
  - [www.baobablimes.org](http://www.baobablimes.org)
- Get the code (and more)
  - <https://github.com/BaobabLims>
- Send us an email
  - Training – [dominique@sanbi.ac.za](mailto:dominique@sanbi.ac.za)
  - Helpdesk – [help@baobablimes.org](mailto:help@baobablimes.org)
- **Hands on training event – April 2021**



# Acknowledgements

- Baobab LIMS development team
- South African Medical Research Council
- Africa CDC
- PHA4GE
- South African Department of Science and Innovation
- NRF
- South African Bioinformatics Institute
- B3 Africa and the EU
- Thank you to all participants

